

# STAC

SICKLE CELL TRAIT AWARENESS CAMPAIGN: CA

Powered by



**CAYENNE**

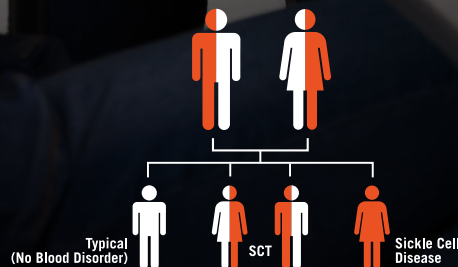
Wellness Center and  
Sickle Cell Disease Education & Awareness

## KNOW WHAT'S IN THEIR GENES

### WHAT'S SCT?

Sickle Cell Trait (SCT) means that a person has inherited the sickle cell gene from one of their parents.

### HOW'S IT PASSED DOWN?



### WHO HAS IT?

Approximately 3 million people in America have Sickle Cell Trait and many are unaware of their status.

LEARN  
MORE:



- ▶ [stac-california.org](http://stac-california.org)
- ▶ Become an Ambassador
- ▶ Contact Us

**STAC**

SICKLE CELL  
TRAIT  
AWARENESS  
CAMPAIGN- CA