

STAC

SICKLE CELL TRAIT AWARENESS CAMPAIGN: CA

Powered by



CAYENNE

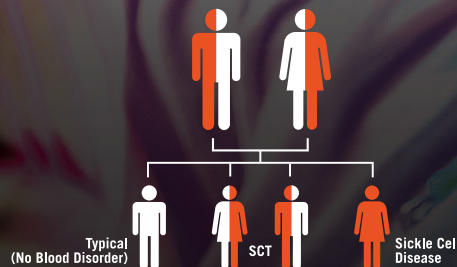
Wellness Center and
Sickle Cell Disease Education & Awareness

DOING IT? GET TRAIT TESTED WITH FRIENDS

WHAT'S SCT?

Sickle Cell Trait (SCT) means that a person has inherited the sickle cell gene from one of their parents.

HOW'S IT PASSED DOWN?



WHO HAS IT?

Approximately 3 million people in America have Sickle Cell Trait and many are unaware of their status.

LEARN
MORE:



- ▶ stac-california.org
- ▶ Become an Ambassador
- ▶ Contact Us

STAC SICKLE CELL
TRAIT
AWARENESS
CAMPAIGN: CA